



Ballard Golden Beavers 2015 Scholarship Winners

by Carol Hoover

At the 28th Annual Scholarship Luncheon in May, the Golden Beavers gave out nine scholarships, plus six self-directed scholarships. We were asked to choose students who were going to a 4-year colleges in the following categories: General, Music, and Science. Each year those categories can be changed should we receive different requests from the membership, or we as a committee want to change them.

Students receiving Scholarships at our annual luncheon are shown on page 4, but we invite you to learn more about them below:

Scholarships to Four-Year Schools

Alena Sorensen plans to study math and anthropology and her ultimate dream is to be a doctor. She would like to join the Peace Corps to make a difference.

At Ballard, Alana was a member of Link Crew, a member of Honor Society, and played on the Varsity Soccer team.

After school, she tutors students and volunteers at Swedish Hospital.

Rachel Thomson plans to study molecular biology and earn a graduate degree in biomedical science.

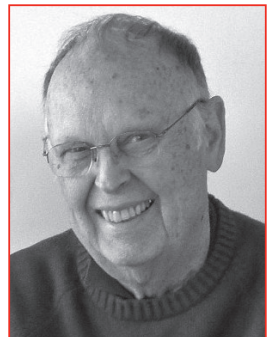
At Ballard, she was a member of Link Crew, volunteered for Special Olympics, and was Vice President of SLAM (Students Lives Always Matter). She was the number one varsity tennis singles player and was Captain of the tennis team for two years. She was also a first place winner at the NW Association for Biomedical Research.

A member of the Seattle Youth Orchestra, Rachel has placed first and second in the Simon Flute competition and is a 10-time Gold Seal recipient at the Seattle Youth Artists Music Festival.

Editor's Note

by Jon Setter '54

Being healthy, and staying healthy is Important to retirees. It helps keep one positive, and more likely to experience the joy and satisfaction of life in retirement. Getting out to go fishing, play tennis or golf, go yachting, meet with friends or family for meals helps one keep from feeling lonely - a real downside to being sick. One must focus on his/her health as much as is possible. Eat good food and proper exercise is important. Get inspired and stay healthy before and during retirement. In later years it can be hard to stay healthy, but always do your best



now



and then -
senior photo

Derek Fromm plans to study Engineering so he can do research and designing cutting edge technology.

At Ballard he was a member of the Cross Country and Track teams and Captain of both teams. He was a member of the Ballard High Symphonic Orchestra, the Ballard High Chamber Orchestra and Fiddle Ensemble, and leader of the second violins for two years. A member of Link Crew, he was Rotary Student of the Month.

Outside of school, Derek is an avid paddle boarder and has been competing for three years. He also coaches a paddleboard team.

Madeline Brown plans to study computer science. Her goal is to do research that helps people rather than churning out consumer products. She is interested in space-related aspects of learning and exploring space.

At Ballard, she was a member of Link Crew and a member of National Honor Society, where she is a volunteer coordinator. She is one of two students working on an underwater ROV in hopes of finding underwater treasure.

continued on page 4

2016 Scholarship Luncheon

Ballard High School Golden Beavers 29th Annual Scholarship Luncheon

Date and location to be determined (April/May 2016)

**BALLARD HIGH SCHOOL
GOLDEN BEAVERS**
P.O. Box 70572
Seattle, WA 98127-0572
dhsimpson2002@q.com

OFFICERS
President
Don Simpson '53
dhsimpson2002@q.com

Vice President (Pro Tem)
Dick Mitchell '51
rjdickm2@aol.com

Vice President
Evelyn Sorrentino Balch
206-542-2748
balchevelyn@gmail.com

Treasurer
Henry L. Nornberg '51
hnornberg@ejcpa.com

Membership Secretary
Judy Rikansrud '58
judyquilt@comcast.net

Recording Secretary
Carol Davis Hoover
360-419-6899
cdhoover@clearwire.net

Immediate Past President
Charles "Charlie" J. See '56
charlieinballard@yahoo.com

Scholarship Committee
Jack Lawson '52
jrlawson_sr@yahoo.com

Log Chairperson
Jon A. Setter '54
jongoldenbeaverslog@earthlink.net

The Golden Beaver Log is published twice yearly by the Ballard High School Golden Beavers Association.

From 1988 to, and including, 2015, Ballard High School students received 247 Golden Beavers Scholarships for a total of \$502,566.61.

Golden Beaver Past Presidents	
Ben Adams '32*	'87-'88
Lee Bass '37*	'88-'89
Ralph Peterson '32*	'89-'90
Robert Tourtillotte '36*	'90-'91
Tena Vander Hoek Carver '37	'91-'92
Henry T. Simonson '36*	'92-'93
Glen H. Neuman '37*	'93-'94
Winifred Early Meier '35*	'94-'95
Ellen Rundquist '38*	'95-'96
R. Keith Miller '40*	'96-'97
Louis V. Larsen '42	'97-'98
Dan Hardman '44*	'98-'99
Lillian Raker Britain '39*	'99-2000
Lawrence "Tag" Christensen '41*	2000-2001
Toby Perry '47*	2001-2003
Fred R. Strom '50	2003-2005
Bill A. Burnett '44	2005-2007
Jack R. Lawson '52	2007-2008
Carol Ann Aplin Echols '48*	2008-2009
Alan R. Hutchison '53	2009-2011
Charles "Charlie" J. See '56	2011-2013
*Deceased	

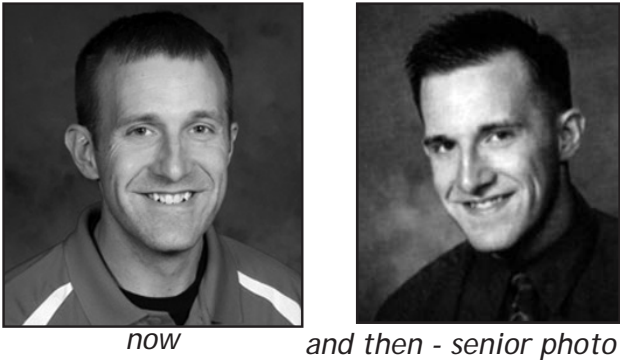
Principal's Greeting

by Keven Wynkoop '94, BHS Principal and Golden Beaver Scholarship recipient

Golden Beavers and Distinguished Alums, As our building staff prepares to open the building for the 2015-16 school year, I have been reflecting on how fortunate we have all been to have Ballard High School in our lives. The mentors that have touched our lives, the friendships that we have formed, and value that we have gained from a world class education in the heart of our neighborhood. I take such pride in our school, and I am so excited to welcome 500 new 9th graders into our extended family.

It was great to see many Alums at the recent Ballard High School Foundation Golf Classic, and Dinner of Champions recently at Newcastle. We were able to raise some much needed money for Ballard's Athletic, and Music programs, which was highlighted by an amazing commitment that will potentially fund Ballard's Athletic Trainer for more than two years. Funding this position is vital for the health and safety of our athletes, and our friends and alums really stepped up to fund this need.

We had so many things to be proud of last year: multiple Metro Championships, top



notch performing arts programs, a nationally renowned Film Program, academic academies, and pathways that prepare students for 21st century jobs, and graduates at some of the most prestigious universities in the country. Our Beavers continue to reach amazing heights!

When I get in front of the Class of 2019, I am going to stress their place in more than 100 years of tradition, community, and Ballard Pride. Your support and involvement drives home that point, and makes those ideas a reality. I count on your continued support to make a difference in the lives of our current Beavers. They will make you proud!

Welcome Our Newest Golden Beavers!

Updated to Life Membership
Elizabeth 'Beth" Sorrentino Johnson '55
Dick Kerns '51
Nancy Hofacre Malmgren '47

New Life Members
Robert "Bob" Anderson '54
Craig A. Christianson '65
Susan J. Hanson '56
Sandra Williams Johnsen '62
Linda Johnson Nelson Machado '58
Maureen Rumble O'Brien '64
Sandra Beckly Rath '58
Larry Smith '43
Rick Sproul '62
Jack Wheeler '54

New Annual Members
Earl Hilberg '63

Elaine Mary Hilberg Dunn '64
Gary L. Dye '53
Ronald Fowler '53
Ann Taylor Freimuth '57
Lenore Snyder Hobson '51
Ken N. Johnson '61
Jon M. Jonsson '46
Lawrence Lysen '55
Lyman Newton '55
Arlene Miskulin Nicholas '48
Deloris Strom Ockenden '47
Terry B. Patterson '60
Gretchen Stroh Scheumann '53
Richard 'Dick' Scheumann '53
Charles 'Neal' Slaughter '53
Arlene Gidlund Steele '52
Jacklyn Sroufe Toman '44
James P. Vik '50

Note:
1130 Total Membership
982 Life Members
12 Friends of Golden Beavers
136 Annual Members

See page 3 to join today!

About Your School: A Few Highlights

Founded in 1901 and currently serving 1688 students, Ballard High School is the oldest high school in the Seattle School District, with a proud tradition of excellence and a vibrant blend of tradition and innovation. In addition to the numerous awards our students and special programs receive, Ballard High School faculty receives significant recognition. Last year, faculty awards included Washington State High School Principal of the Year, Keven Wynkoop; Washington State Physics Teacher of the Year, Eric Muhs; and Washington State

Young Choir Director of the Year, Courtney Pelavin. Ballard High School has been awarded the highest possible Segmentation Level, a district measure which indicates accomplishment in meeting academic goals and closing the achievement gap, for more consecutive years than any other Seattle high school. In 2014, Ballard was again awarded the Washington Achievement Award for Overall Excellence by the Office of the Superintendent of Public Instruction.

President’s Message

by Donald (Don) Simpson ’53
Dear members and Friends, we’ve have had a wonderful summer. I hope you all enjoyed it as much as I did.
Now the kids are returning to school, and it’s time for us to start rebuilding our organization so that we, with our alum support, can continue to help make Ballard High School the envy of the district. We need more volunteers and class reps to attend quarterly meetings where we plan the annual spring scholarship luncheon, and organize recruiting efforts the scholarship award program. Also, we currently need a new president, and a new recording secretary. I have served as president for over two years, and as much as I have enjoyed the experience we need new

blood. If you would like to learn more about these opportunities, contact me by email: dhsimpson2002@q.com, or any of the other GB officers, or just show up for the next quarterly meeting : Dec. 10th, 10.00 A.M. at the Nordic Heritage Museum.
We have had a very good year. Our luncheon in May was a great success, and we honored 15 outstanding students with two year, and four year scholarship awards. We also received a gift worth over \$200,000, which guarantees our money for scholarships for many future years.
Please join our Golden Beavers group, have fun renewing friendships, and help our Ballard High School students.
We are particularly reaching out to members from the classes of the 60’s.



now



and then - senior photo

We have never sold our lists of members’ names or email addresses to any one, and don’t plan to in the future, so don’t worry about this sort of thing.
Joining is very easy and cost very little, so please step up and get involved.

The Ballard High School Golden Beavers Association

The Golden Beavers Association was established in 1987 by the class of 1936, following their 50th Class Reunion. The first officers of the GBA were: President Don Adams ’36; Treasurer Cal Jorgenson ’36; Secretary Bernice Whiteley Anderson. Although started by the class of 1936, other classes also provided funds for the first scholarship awards.
The focus of the Golden Beavers is providing scholarships annually to deserving Ballard High School seniors. The Golden Beavers

Scholarship Program is meant to stimulate, within the Ballard student body, the desire to achieve goals that prepare them for advanced education and/or training upon graduation.
Financial support for these scholarships is derived through membership dues, memorial contributions, wills and bequests.
The Golden Beavers Association is Ballard High School’s only alumni association. It serves to keep alive the spirit and traditions of Ballard High School. It publishes this newsletter twice

each year to keep members informed and engaged. At its annual spring luncheon, the student scholarship recipients are welcomed and introduced to the assembled members.
When your class is in its 50th year since graduation, you too can join the Golden Beavers Association and continue the tradition of the Scholarship Program!
For more information, contact Don Simpson ’53 at dhsimpson2002@q.com.

Scholarship and General Fund Donors

The association expresses its gratitude for the generosity of the following who have donated gifts. We will acknowledge other donors in future issues of Golden Beaver Log. If you would like to contribute please use the coupon on page 3 of this Log and mail it to: BHS Golden Beavers Association, P.O. Box 70572, Seattle, WA 98127-0572; or if you want to submit it online please visit: <https://secure.acceptiva.com/?cst=bac012>.

Chairman’s Club (\$1,000>)

- Earl M. Bivins ’50 (S)
- Susan Leona J. Garvin ’50 (S) & (GF)

President’s Club) (\$500 to \$1,000)

- Executive’s Club (\$200 to \$499)
- William B’ ’Bill’ Harbert ’hon: in memory of Nancy Harbert (S)
- Gary E. Holland ’56 (S)

- Jacqueline Anderson Matson ’50 - Music (S)
- Noreen Anderson Thomas “53 (S) & (GF)

Century Club (\$100 to \$199)

- Craig Christianson ’65: In memory of Mary Maytsh Watkins. (GF)
- Susan J. Hanson ’56 (S)
- Ronald W. Harper ’51

Booster Club (\$99<)

- Patricia Davis Butler ’53 (S)
- Irene M. Day ’36 (S)
- C. Edward Dillery ’48 (S)

- Janice R. Dixon ’60 (S)
- Elaine Mary Hilberg Dunn ’64 (S)
- Earl Hilberg ’63 (S)
- Lenore Snyder Hobson ’51 (S)
- Sandra Beckly Rath ’58 (S)
- Dean Ruffner ’52 (S)
- Charles ’Neal’ Slaughter ’53 (S)
- Delores Strom Ockenden ’47: in memory of Pat Strom (S)

S = Scholarship Fund
GF = General Fund



Golden Beavers Membership Application

First Name _____ Last Name _____

Name at BHS if different _____ BHS Class _____ (must be in 50th+ year since year of graduation)

Address _____ City/State/Zip _____

Telephone _____ E-mail Address _____

Dues ☐ \$25/one year (the membership year runs 7/1 - 6/30) ☐ \$100/Lifetime Membership

I would like to make an additional tax-deductible donation of \$ _____ to the ☐ General Fund ☐ Scholarship Fund.

Ballard Golden Beavers dues are kept low to encourage as many of our alumni as possible to join. Dues and Scholarship Fund donations go to support our scholarships; the General Fund also allows us to keep our organization running and publish The Golden Beaver Log.

Total Amount Enclosed \$ _____

☐ Enclosed is my check payable to BHS Golden Beavers Association.

Please mail to: BHS Golden Beavers Association, P.O. Box 70572, Seattle, WA 98127-0572
The Ballard High School Golden Beavers Association Federal Employer ID (EIN) • Tax Number 91-1376567 • 501 (c) 3

2015 Golden Beaver Scholarship Winners

Outside of school, Madeline is a teen advisor at the Ballard Library where she helps to plan events and displays. She is an interpreter at the Seattle Aquarium, where she interacts with visitors, and answers questions the visitors have.

Ivy Watkins plans to major in Nursing and plans to become a pediatric nurse because she wants to help others.

At Ballard, she was ASB junior class treasurer and ASB Secretary, and a member of SLAM, the National Honor Society, the Academy of Finance, Link Crew, and the Varsity Volleyball team.

Outside of school, she was head camp counselor at Camp Fire Camp. She volunteers at Swedish Hospital and at Phinney Ridge pre-school, where she reads books, helps with art projects and escorts students on field trips.

Madeline Barnes plans to major in music because music has been an important part of her life.

At Ballard, she was a member of Concert Choir, Chamber Choir, the Wind Ensemble, and the Jazz Band. She participated in the Drama Departments presentations *Urinetown* and *Thoroughly Modern Millie*.

Madeline was accepted into the NAFME all Northwest Choir. She participated in the State Solo and Ensemble Competition and received all one ratings. She is the Kiwanis musician scholarship winner.

Madeline was a member of the Ballard High Jazz band that took first place in the Portland Jazz Festival and the Ballard High Jazz band that was accepted into the Monterey Jazz Festival. She is also director of the Ballard First

Lutheran children's choir.

Scholarships to Two-Year Schools

Byron Buck plans to major in Fire Science and wants to become a firefighter. His goal is to keep people from danger and being a firefighter will help him reach that goal

At Ballard, Byron was a member of the Maritime Academy. He also works at QFC and does summer yard work.

Eric Luna Rivera plans to study Criminal Justice. He is looking forward to obtaining higher learning and understands that education is the path toward success.

At Ballard, Eric was a member of Union Latina where he helped at meetings, set up Day of the Dead activities, and volunteered for Cultural Night. He was a member of the Varsity Soccer team and was MVP for Varsity Soccer. He was also Student of the Month.

Outside of Ballard, Eric coached a grade school soccer team.

Thomas Wicker-Fetzer is passionate about the outdoors and plans to major in Forestry Management.

Thomas is an Eagle Scout. His project was creating an Emergency Preparation Plan for his neighborhood. Along with neighborhood meetings, he composed a book to pass to the neighbors. He also mounted gas meter wrenches for emergency shut off on his block.

Boy Scouts has answered a love of the outdoors. While camping, he rode down rapids during the night because the forest was on fire all around their campgrounds.

Detert Family Scholarships

Zachary Ehrlich plans to major in Business. At Ballard, he was a member of the

Scholarships to a 2-Year School



Byron Buck



Eric Luna Rivera



Thomas Wicker-Fetzer

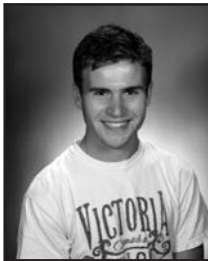
Scholarships to a 4-Year School



Alena Sorensen



Rachel Thomson



Derek Fromm



Madeline Brown



Ivy Watkins



Madeline Barnes

Self-Directed Scholarships



Zachary Ehrlich
Detert Family Scholarship



Melat Assefa
Detert Family Scholarship



Shea Carroll
Detert Family Scholarship



Katy Graham
Lyle McAlmond Scholarship



Lindsey Fasser
Roby Bader Scholarship



Gabrielle Gersten
Bernice Whiteley Anderson Scholarship

Academy of Finance, Link Crew, and the National Honor Society. He was Captain of the golf team and of the baseball team, and was Student of the Month.

Outside of Ballard, Zachary volunteered with the Magnolia Little League, where he coached a team.

Melat Assefa plans to major in business. She would like to work with a company that helps less fortunate people. Some day she would like to return to Ethiopia and help her country prosper.

At Ballard, Melat was a member of the Academy of Finance, DECA, SALM (Student's Lives Always Matter), and Link Crew. She also played Varsity Tennis.

Outside of Ballard, Melat is a member of Young Executives of Color (at the University of Washington). She also works with 826 Seattle, where she is a youth mentor and tutors grades 1-8 in math and reading, and is a member of the Youth Advisory Board.

Shea Carroll plans to major in medical science and genetics; he wants to help create positive changes in the world.

At Ballard, Shea was a member of Link Crew. He played Varsity football for three years, and was Captain and second team all-metro. He ran Varsity track for two years and played Varsity basketball for one year, when

he was voted Most Improved. He was also a member of the National Honor Society and was nominated to represent the Biotech Academy at the Imagine Tomorrow competition at WSU.

Outside of Ballard, Shea works at Swanson's Nursery. He volunteers at Campfire Day Camp where he was a head counselor and at a local food bank.

Lyle McAlmond Scholarship

Katy Graham is undecided on a major but excited to start her new phase of life and wants to try all different things she has not had a chance to try. She also wants to see the amazing things the world has to offer.

At Ballard, Katie played girls Lacrosse, was the Varsity Goal Keeper, and was voted the MVP last spring.

Outside of Ballard, she works in the family business, where she cuts, trims and removes trees, does weeding, mows lawns, paints, hauls unwanted items, walks dogs, and can care for chickens, birds and rabbits.

She also volunteers at Catherine Blaine as a soccer coach, guitar teacher, and teacher's assistant, and volunteers at 30 hour Famine where she helps with fundraising and provides awareness of World Vision Hunger Campaign.

Bernice Whiteley Anderson Scholarship

Gabrielle Gersten plans to major in education because she loves working with children.

At Ballard, Gabby is a member of Link Crew, the National Honor Society, Earth Service Corp, and Student Lives Always Matter (SLAM). As a part of SLAM, Gabby goes to Middle Schools to speak to their students

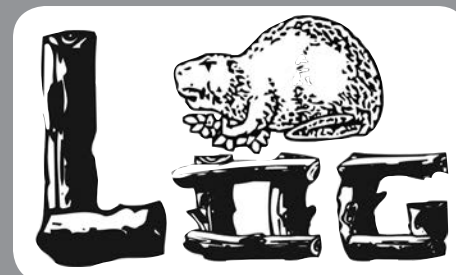
continued on page 12

Support our Scholarships -
Donate now!

See form on page 3
or visit
www.bhsfoundation.com/index.php/stay-connected/golden-beavers
today!

Golden Beaver

Class News



Class of '65 50th Reunion

Class Secretary: Keith Hamack
hamacks@msn.com

Class of '64

Class Secretary: Melinda Walsh Lamp
mwlamp@comcast.net
Additional Class Representative: Camille
Anderson, 425-868-7326/
acamille5@aol.com

The class of 1964 is alive, well and active. Our fall 2014 50th class reunion was a great success, and we renewed friendships, made new ones, and promised to make the next reunion. Held in Ballard at the Leif Erikson Lodge in the heart of downtown Ballard was the perfect location. Two of our teachers joined in our celebration, adding to our memories. Two classmates put together a Memory Table reminding of us classmates missing, gone too young. It was important to remember those we have lost too soon, and cherish the memories of those Ballard years. For over a decade a group of gals has met for lunch quarterly to keep friendships going, be supportive of each other, and share special events. Larry Childs thought it a great idea to have an open lunch inviting all of our class, and Gary Seefried made available his Sluggers establishment in Kirkland. Both gatherings were well attended, and fun for all the attendees. More gatherings are planned. Our class has a FB page for updates... Ballard HS Class of 1964. If you think you are not on our master roster please contact Melinda (Walsh) Lamp at mwlamp@comcast.net.

Class of '63

Class Secretary: Art Olsen
artolsen63@gmail.com

Class of '62

Class Secretary: Blair Leckie
cblairl@yahoo.com

Class of '61

Class Secretary: Ken Bartlett
bartlett designs@comcast.net

Class of '60 55th Reunion

Class Secretary: Ingvar Carlson
(206)434-9482/
ingvarswedecarlson@yahoo.com

Class of '59

Class Secretary:

Class of '58

Class Secretary: Judy Olson Rikansrud
206-542-1898/judyquilt@comcast.net
Additional Class Representative: Norma Joy

Class of '57

Class Secretary: Needed
Additional Class Representative: Norm Werner



Class of 1957 Girls Lunch 5-2015

Class of '56

Class Secretary: Sandy Brown Hertz
slhertz@comcast.net
Additional Class Representatives: Evelyn
Sorrentino and Charles J. See

ATTENTION ALL '56 ALUMS!! Believe it or not, our 60th year anniversary of officially leaving Ballard High School is very quickly approaching, and will be here before we know it! Not certain how many of us are ready to admit it, but we do need to have some dialog within our class as to just how to celebrate (or not) the year 2016.

The reunion committee should be meeting very soon, and would appreciate in-put from our class members who have thoughts concerning the 'celebration' idea: anyone interested? Please make your thoughts known to someone involved with the paper you are reading right now. My e-mail address is: SLHERTZ@comcast.net. Charlie's is charlieinballard@yahoo.com. Editor Jon's is jongoldenbeaverslog@earthlink.net. A brief yes or no, or a suggestion to offer, but please do it now while you are thinking of it.

— Thanks very much! Sandy Hertz, class of '56 secretary

Continued from Spring 2015 Edition - Charlie ('56) & Carleen See's Hawaii Adventure.

We arrived on the Big Island at 10:15 A.M. September 27, 2014 from Maui (Hawaii Time), and immediately received a call on our cell phone from our son Chad that at 10:15 A.M. Seattle time we became grandparents of a granddaughter who arrived 20 days early. Of course we wanted to see and hold her, but realized we would enjoy our vacation, and look forward to a pleasant homecoming 5 days later.

Our good friend Jim McManus ('73) met us at the Kona airport, and drove us down the road where we picked up our rental car, stopped for lunch at a local family owned café

overlooking the valley where the McManus's home is located, and then spent the day relaxing with Jim around the swimming pool. Later that evening, Jim prepared a delicious home cooked meal we enjoyed eating on the patio next to the pool.

The next morning Carleen and I left for a two-day tour working our way to the Hilo side of the island. Ka Lae was our first stop (The Point) known as South Point because it is the most southernmost tip of the United States. We then continued on toward Volcanoes National Park, but not before stopping at Punalu'u Bakeshop famous for its sweetbread, and good lunches. We continued on to our hotel located in the city of Volcano located only about a mile from Volcano National Park. We had a short drive to the park where Kilauea Visitor Center is located. This is a must before going any further. Park Rangers explained about history, sites, roads, hikes, etc. Later, we were able to leisurely drive/stroll, and take our time to observe the amazing sites of volcano activity over millions of years. Since the park is open around the clock we returned after dark to Mauna Loa Summit to see the volcano glow at night. (Totally darkness here except for the glow. Bring a flashlight. Spectacular.) A Park Ranger said that we should come back about 4:00 A.M. to hear the lava flow, under the volcano, sounding like waves of the ocean lapping onto the shore. We took his word for it, and did not go back at 4:00 A.M.

The next day we continued on east to Pahoa, Hawaii where active Kilauea volcano was erupting, and threatening the city of Pahoa. We were able to tour 90% of the city, and could not see the volcano flow itself, but we could see the smoke, and smell a slight odor. Many business fronts had closed signs, and several said "Moving to Hilo". The day before, one abandoned house structure was consumed by the flow. The City of Pahoa is a town of 1000 residents made up of an older downtown, and a newer shopping center at its southern section. The State of Hawaii, Highway Dept. was preparing gravel escape routes out of town. Also, infrastructure made more secure. Fortunately the flow stopped on the edge of town with no serious damage to the city during October, 2014.

Later in the afternoon Carleen and I drove 30 miles to Hilo, known as the wettest city. We were greeted with bright sunshine with temperatures in the high 80's. We toured sights along the beaches of Hilo; Rainbow Falls and some of the downtown section. Like any other city heavy traffic, many traffic lights and confusing signs. Beautiful waterfront.

One stop before heading west to Kona was the Black Sand Beaches, and the popular resting spot for Hawaii's green sea turtles. One point of advice - do not try walking on the black sand in bare feet, it is HOT.

Finally, we turned west back to Kona on highway 200 over the Mauna Kea mountain, with an elevation of 13,796 feet. We encountered almost all the weather conditions Mother Nature provides, rain, hail, fog, and wind with blowing sleet. Everything except

Golden Beaver Class News

snow. We made it through safely, although my knuckles were white. My knuckles suddenly became whiter when a car in front of us never turned on his lights. We could only see him when he stepped on his brakes.

While we were traveling, Lynn ('72) arrived on the island after a business trip she was on in Oregon. We had another nice relaxing poolside dinner, and great conversations of good times. No business talk.

Early the next morning the McManus's took us on an all day adventure sight seeing trip of approximately 200 miles seeing sights that the average tourist would never see. Jim stopped off at a viewpoint where we met a young fellow with his bike, and bike racing attire. He was from Finland, and was training for the annual Hawaii Iron Man Triathlon. He spoke perfect English. We were able to visit and learn a little about the Triathlon. (Carleen is of Finnish heritage, and spoke a few words of welcome to him.) The Triathlon consists of a 2.4-mile swim, a 112-mile bicycle ride and a marathon 26.2-mile run in that order without a break, and must be finished in 17 hours, and each event has a mandatory time to complete. Those who complete the triathlon are honored with becoming the next IRONMAN.

Moving on we traveled around parts of Parker's Ranch, one of the world's largest ranches, (175,000 Acres). Jim and Lynn guided us to the Parker Ranch Museum & Visitor Center where we found among other interesting facts was that during WWII the ranch allowed some 25,000 marines to set up a tent city on 441 acres, and this was the sight the marines trained for the invasion of Iwo Jima.

After our visit to Parker Ranch Center we headed to the Lava Lava Beach Club for a delicious sunset dinner on the beach with the typical Hawaii surroundings. (Oysters on the half shell...hmmmm.) Lynn was our designated driver, so Jim and Charlie were able to consume and evaluate a couple different Hawaiian exotic traditions.

The next day it was saying good-bye and our thanks for an outstanding adventure. We, of course, were anxious to return to Seattle, and to greet our first granddaughter Lilja.

Aloha for now. Maybe sometime soon we can again return to a Hawaiian paradise.

Class of '55 60th Reunion

Class Secretary: TBD

Additional Class Representatives: Donald Hoem and Elizabeth Sorrentino Johnson

Class of '54

Class Secretary: Jon A. Setter
206-523-9276/

jongoldenbeaverslog@earthlink.net

David Arthur Garness '54 died November 6, 2014, age 79, at his residence in Anchorage, Alaska. David leaves behind his wife of 47 years, Shirley Garness, 2 sons, 6 grandchildren, and 3 great grandchildren. He was preceded in death by his son Greg Garness and great -granddaughter Grace Blewett.

On Thursday the 20th of August at the invitation of Secretary of State Kim Wyman, I attended the exhibit opening of "Washington Remembers WWII" at the Office of the Secretary of State, Legislative Building, Olympia, Washington. Honoring veterans who call our state home, Legacy Washington launched its seventh privately-funded exhibit to mark the 70th anniversary of the war's end.

Presented were a dozen stories featuring crucial battles on foreign soil, German concentration camps and the American home front where defense plant workers contributed to the war effort. One of the veterans honored was my father-in-law Les Amundson, Second Lt. Les Amundson, whose doomed B-17 bomber sped toward a turnip field in The Netherlands. A woman on the family farm watched openmouthed as the Flying Fortress skidded the length of a football field before groaning to a halt. It was November 26, 1943, the day of Amundson's first and last bombing mission. The Dutch Resistance led the pilot to a hayloft. Traveling with the Underground in Holland for a month, he eluded capture. But the Gestapo finally caught up to Amundson in Amsterdam. He was taken to Stalag Luft 1, a POW camp 100 miles north of Berlin. Amundson survived 18 months in captivity before Operation Revival evacuated him and 9,000 other prisoners.



Second Lt. Les Amundson

Also present at the exhibit opening was Seattle Mayor Ed Murray with his husband, Michael Shiosak, whose father, Fred Shiosak, was one of the honored veterans.

For stories see: <http://www.sos.wa.gov/legacyproject/washington-remembers/stories/>.

Class of '53

Class Secretary: Lauretta "Laurie" Detert Anderson

206-621-4855/raalea@gmail.com

Additional Class Representatives: Alan R. Hutchison, Donald H. Simpson, and Jan Erk Severson

Class of '53 63rd Reunion:

The Class of '53 luncheon reunion will be held on Wednesday, September 14, 2016 at Broadmoor Golf Club. More information will be available in the March issue of the Log.

Hard to imagine that most of our classmates

have celebrated - or will celebrate - their 80th birthday this year!

Wow! That sounds pretty old!

We would be remiss if we did not mention the passing of Margaret Ann (Svege) Strandoo on February 17th (this was reported earlier by the class of '54). Although Margie was not a classmate of ours, she married our classmate Budd Strandoo in 1956 and they had so many wonderful, marvelous years together with their three children, five grandchildren and a great granddaughter. Margie was one of the sweetest persons I ever knew and, although she had health issues, that smile never left her face!

Sharon (Telquist) Dorsten passed away on March 19th at Omak, Washington. Sharon is survived by her husband Harry Dorsten, five children, 23 grandchildren and 10 great-grandchildren.

On April 9th, Shirley Rundquist DeYoung passed away in Poulsbo, Washington after a long illness. She was preceded in death by her husband of 31 years Wallace James "Jim" DeYoung.

Please classmates, help me out by letting me know of items of interest or if you learn of the passing of a classmate. . This is our way to keep in touch and I will appreciate your contacting me as shown at the beginning of this article.

Class of '52

Class Secretary: Jack Lawson

206-364-3432/

jrlawson_sr@yahoo.com

Additional Class Representative: Joyce Jurich Sorenson

For the past fifteen years or so, on the second Friday in August, we have congregated on the shores of Whidbey Island for the Annual class picnic. Good food, refreshments, sunshine, and remembering the good times we had growing up in the Ballard environment.

This year we had good food, refinements, and the worst thunder, lighting, and rain in many years. Still the 25+ Beavers that braved the weather still had a good time (we were closer together in the rain). Still the vote was to keep the annual picnic a tradition, so see you next year.

P.S. Jerry Robertson can bake a mean strawberry rhubarb pie.

Class of '51

Class Secretary: Richard "Dick" Mitchell

206-784-4484/rjdickm2@aol.com

Additional Class Representatives: Arlene Charles Morrison and Dorothy Simpier Wood

Several classmates attended the 28th Annual Scholarship Luncheon on Saturday May 9, 2015 that was held again this year at Leif Erickson Hall in Ballard. Among them were: Golden Beaver Treasurer Hank Nornberg, Henry Bjornsson, Dr. Allen Brown, Marlene Wendahl Gaw, Ron Harper, Dick Mitchell, Anita Perry Dowsett, and Lenore Snyder Hobson. Reunion Chairperson Arlene Charles Morission said, "We hope to plan and schedule a 65th Reunion for next year" so stay tuned as the saying goes.

Golden Beaver Class News

Class of '50 65th Reunion

Class Secretary:
Additional Class Representatives: Gloria Sorrentino Hablewitz, Donna Petrie Millard, and Fred Strom

The class of '50 held their 65th celebration led by class president Earl Bivins at Anthony's at Shilshole on Wednesday September 16, 2015. More than sixty persons attended which were mostly graduates. Our school representative was Principal Keven Wynkoop '94 who gave us an up date on current events at school plus some interesting comparisons of Ballard High in 1950 and 2015. He highlighted many of the new programs that didn't exist in the 1950's such as Robotics, Video Production and BioTech to name a few. Our principal class speaker was Glen Nutter who described his life as an Educator. He became Superintendent of the Yelm school district and the past few years he has lectured, trained teachers, and set up educational programs in East Africa. He was recently elected to the BHS Foundation Wall of Recognition which is awarded to high achievers. Tom McAdams came the furthest to attend. He lives in Newport Oregon and has also been honored as a high achiever and was featured in Life Magazine for his life saving activities during his many years in the US Coast Guard. It was a nice sunny Seattle day and most stayed around to visit long after the program was over.

Class of '49

Class Secretary: Anna K. Scheving Freyberg
206-783-6949/freybjw@aol.com

Class of '48

Class Secretary: Mildred (Millie) Sather
206-362-4195/milliesather@comcast.net
Additional Class Representatives: Beverly Smith Long, Pricilla Stevens Hansen, Myla Janes Belston, and Jo Schimdt Bell

I was pleasantly surprised to receive a letter from Marshall Hansen. He has lived on the East Coast over 40 years and has been retired from the National Weather Service since 1993. He recalled an incident that happened to him when he visited Iquassu Falls, between Argentina and Brazil, in 2007. He was asked to take a picture of a man against the Fall's backdrop. A conversation followed during which he was informed the man was from La Conner. Since Marshall grew up only four houses from Dan O'Donnell and had been playmates with him in Seattle, he asked him if he knew Dan, an ex-mayor of La Conner.

Deadline for submissions for the
Spring 2016 Issue of the Golden Beaver Log
February 19, 2016

Are you changing your address?
The Golden Beavers want to know!
Tell your class secretary today.

Yes, he knew of Dan, and would greet him if he met him when he returned home. Marshall was surprised to be 6,000 miles from home and find someone who knew of his friend. I answered Marshall's letter and told him Dan and I both taught high school in Aberdeen our first year out of college, 1952-53.

Bev Bruce Carlsen visited her son again this fall. I met her for lunch at Ray's Boathouse together with Doris Sater Hovick and Louise Berg Tollefson. We always have so much to "discuss". Hopefully, she'll come again next year.

In September, Dolores Finseth Moore and a friend will go on a 32 day cruise on Holland America to Singapore, Guam, Hawaii, plus other stops. She keeps very active! Dolores heads a lively group of 20 women who meet monthly for lunch. Last month was their 10th anniversary. Bev Smith Long, Myla Belston and I attended the celebration. All 20 women came.

Gwen Strygen called to notify me her sister, Janice Strygen Natchtwey, passed away February 9, 2015 from Parkinson's. She lived in Eugene, Oregon and had five children.

Our class also lost Chuck Mullavey February 23, 2015. While at Ballard High, he excelled academically and also in numerous sports. For 60 years he practiced law in Ballard, which he thought was the best place on earth. He is survived by his wife, Marilyn, and their four children and families.

Please remember to call me or write if you have any news of members from the class of 1948.

Class of '47

Class Secretary: Delores Strom Ockenden
206-362-4931
Additional Class Representatives: Ruth Nelson Turner and Pearlletta McGinn Rasmussen

Class of '46

Class Secretary: Tootie Zeckser Olson
206-364-3895

Class of '45



Class of '48 at the Golden Beavers Luncheon:
Dolores (Finseth) Moore, Mile (James) Belton,
Mildred Sather and Louise (Berg) Tallefson



Mila (James) Belton, Dolores (Finseth) Moore
Mildred Sather, Louise (Berg) Tallefson and
Mary and John Cooley,

70th Reunion

Class Secretary: Louise Sorenson Youngs
425-746-3592
Additional Class Representatives: Jack Snell, Miriam Barth-Hyde, and Lloyd Trafton
Inquiries and News may be sent to Lloyd Trafton, Class Editor, traftonlf@comcast.net

The class of 1945 is holding its 70th reunion on September 16th at Ray's Boat House. So far about fifty have signed up. We are calling it quits, although the quarterly luncheons graciously scheduled by Fran Sigurdson Cook will continue. For information in regard to class mates or events call Lloyd Trafton (360) 489 8192. His phone number/address list is becoming obsolete, but he may be able to put you in contact with your old heart throb. We are the last class to have World War II veterans. Once the Japanese discovered our 1945 classmates were joining the service their surrender was inevitable. Within two months of our graduation they surrendered. Over the years '45 has had several notable reunions. Namely the big '44, '45, '46 combo in 1990 at the Nile Temple Country Club. There were over 400 in attendance (Our 45th reunion). At our 65th there were seventy attendees to renew old friendships and Stan Boreson played his accordion and joked. This year we tried to get King Harald of Norway for our program, but he arrived too early for our reunion. A few of us were invited to his dinner (along with many others, at the Sheraton). No one from our group chose to attend. (It was \$125.00 a plate) This class has been a pace setter for years. We have authors, women CEOs, doctors, lawyers, very few politicians, plus honest laborers. and musicians. It has been reported that the largest collection of genius grandchildren are from our class. Since all our commencement speakers are still with the program and our cheer leaders are gone, one can generalize: It is better to speak about the future than to shout about the present Go old Beavers!

Class of '44

Class Secretary: Karin Gorud Scovill
425-673-7881/karsco13@comcast.net
Additional Class Representatives: Elaine Johnston Schreiner and Bill Burnett

The deadline for the Fall issue of the "LOG" has passed, and it's been hard to get in the Fall mood. Friday (8/14) helped, as I watched the lightning, heard the thunder, and saw the downpour of rain. We all know there will be more sun coming, but we also know September starts up our other lives. Remember, there was Labor Day and then school started.

There is sad news:
Edith Bodie Rohrback '44 passed away May 16, 2015, she had been sick for a few years. She was active with the Golden Beavers Association as Class '44 Representative and Class '44 Secretary. She attended the Ballard Ladies Luncheon group until she became ill. There was a "Celebration of Edith's Life" May 29, 2015 at Calvin Presbyterian Church in Shoreline.

My brother Steinar E. Gorud '43 passed away May 14, 2015. I know some of you knew him. He married his high school sweetheart, Virginia

Golden Beaver Class News

Durall '43, May 31, 1946. Ginny passed away March 19, 2006. They lived in Clarkston, WA. Please remember to send me the news.

Class of '43

Class Secretary: Lorraine Jacobson Early
206-363-7781
Additional Class Representatives: Pat Ward Ross, and John Wick

Class of '42

Class Secretary: Henning Knudson, 206-782-1996
Additional Class Representatives: Louis V. Larsen, Barbara Jane Christie, and Dwight S. Hawley, Jr.

Class of '41

Class Secretary: Alice Svenslid Sagstad
206-783-2552
Additional Class Representative: J. Helen Donald Argen

Class of '40 75th Reunion

Class Secretary: Doris Hawthorne Crowley
206-284-3821
Additional Class Representative: Madeleine Quirk Grandy

Class of '39

Class Secretary: June Backlund Holden
206-362-2145/june@ncplus.net
Additional Class Representative: Betty Purves Bostrom

Class of '38

Class Secretary: Charles "Chuck" Harlow
206-284-2742
Additional Class Representative: Corrine Hendrickson Williams

Class of '37

Class Secretary: Audrey Jarvis Walloch
425-512-8796
Additional Class Representatives: Kenneth H. Passe and Vern Nordstrand

Class of '36

Class Secretary: Caroline Heck Haga,
425-488-8340

Class of '33

Class Secretary: Margie Nelson Conover
206-362-5629
Additional Class Representative: Katherine Blomeke Herndon

A Celebration

August 19, 2015 in Edmonds, Washington, Golden Beaver folks Al (Moose)'56 & Dorothy Clausen, Dorothy & Norm Goldstein, Carleen & Charlie See '56 and back row Sidney Green '57 had a exquisite Chinese dinner and visit to celebrate 62 years of friendship with Ballard's memorable basketball coach Norm Goldstein and his lovely wife Dorothy.



Above Front: Al "Moose" Clausen '56, Dorothy Clausen, Dorothy Goldstein, Norman Goldstein, Carleen See, Charlie See '56
Back: Sidney Green '57



right: Norman and Dorothy Goldstein, married 71 years in 2015

In Memoriam

Acknowledging those whose loss has been reported to us since last spring.

David R. Anderson '58
Paul Anderson '67
Odd Bjarne Andvik '40
Luville Pels Astrander '39
Donald Earl Bauman '38
Janet Lucille Wiggen Bedler '45*
Hakan "Hap" Berg '37*
Doris Irene Hansen Butler '51*
Joyce Glick Caruso '42
Evelyn Wykes, Soens, Whaley Colby '37
Jack Compton '72
Ragnar "Ray" Dahl '37 *
Shirley Rundquist De Young '53
Sharon Lee Telquist Dorsten '58
Myrtle Maria Roosilline Eggan '39
William John "Willy" Earp '58
KellerJennie A. Egaas
Richard "Dick" Finseth 47
Carolyn Veron Fletcher '63
Donald Walter Fortune '44*
Betty Lou Leiren Gardiner '45*
David Arthur Garness '54
Keith Graves '56 *
Martin Leland Gustavason '45
Francis Virginia Campbell Haigh '36
Robert S. Hansen '39 *
Lawrence O. Hamilton '41*

Virginia "Ginnie" Fox Hammer '58
Sylvia Serene Johanson Hoddevik '50
Marilyn Joyce Sigler Hoffstater '48
Jeanine Glaman Hola '53
Tom Hopkins '39
Ronald Glenn Johnson '66
Lois Olason Keller '48
Margaret "Peggy" Sather Koepp '45*
Anne Elizabeth Christie Lasley '35
Robert "Bob" Joseph LaLanne '38
Irene Marie Spearman Larry '50
Daniel Webster Lida '41
Tor Henry Jonas Lundquist '41
Edith M. Maines '35
Dennis James Meehan '57
June Ward Mills '39
Charles N. Mullavey '47*
Charles Woodard "Woody" Myers '47
Astrid "Austie" Hoydahl Odegard '49*
Donald Charles Olson '69
Dorothy Nicholson Osborn '38*
Laverne Thomas Patterson '39
Shirley Ann Peterson '44
Regnor Andor Reinholdtsen '62
Tom Rogerson '56
Marilyn Moen Ruffolo '50
Kathleen Patricia Sather '45

Audrey Schatz '51 *
Janet LeRoy Seavy '57
Richa Selby '59
Jean Solberg Bryant Simmonds '42
Vivian Muriel Christianson Sims '42
Egil Smedvig '41*
Lois Johnson Lee Soley '39
Randel Omar Stenesen '62
Margie Svege Strandoo '54*
Marilyn Rose Webman Squibb '47
Steven Melvin Thomas '65
Clark Storch Thompson '41*
Joan Homsher Usitalo '56
George W. Wade '47
Gloria Jean Simpier Warcup '50*
Fred Wathne '43 *
Lois Eleanor Gunnon Wieder '43
Ethyl Leighton Wheat '44

*Golden Beaver Member



Ballard High School Academies and Pathways

Ballard High School offers a variety of small academies and pathways that provide unique learning opportunities while simultaneously respecting students' individual choices. Our academies include the Academy of Finance, Biotechnology Career Academy, Digital Film and Video Production Pathway, Maritime Academy, and Project Lead the Way Pre-Engineering Pathway. Students

are not required to select an academy or pathway, but many do as these are subjects about which our students are passionate. Most of these programs supplement the student's core academic class schedule. The Biotech and Maritime Academies are the exceptions; Biotech requires three years of interdisciplinary English, math, and science courses in a cohort model; Maritime requires

Biology, US History, and Oceanography in addition to Maritime elective courses. Our Maritime Academy students won the 2014 World Invitational Survival Suit Championship, besting competitors including the Coast Guard. All of these programs offer a multi-year sequence of courses which allows students to explore subjects in depth.

Genetics Students Compete in Bio Expo

SeaVuria category opens opportunities

The Talisman
Ellery Lloyd, Staff Reporter
June 2, 2015

On May 27, students in advanced biology classes, mainly genetics, are competing in the Student Bio Expo at Shoreline Community College. Students who participate in the Bio Expo compete against other students in the region. “It’s a competition in the Puget Sound area but there are schools from eastern Washington as well, so there’s going to be about 380 students competing,” genetics teacher Penny Pagles said.

The students competing come up with a project in one of 11 categories ranging from lab research and molecular modeling, to drama and dance. Students address a scientific idea through their chosen category.

Most students competing in the expo have been working on their projects since October. “A lot of my students write a research paper in the fall semester, on a genetic disease, so a lot of students take that research paper and turn it into their bio expo project,” Pagles said.

This year a new category, SeaVuria, has been introduced. The category challenges students to turn their project into a collaboration between them and the organization SeaVuria, which connects Washington State students with students in Kenya to help communities struggling with malaria.

“It involves a collaborative project between us and a team of girls from Bura Girls High School in Kenya,” Biotech student Paloma Roberts-Buceta said. Roberts-Buceta and Tiara Adler are at work on their Bio Expo project in the SeaVuria category. For their project they have been focusing on the research aspect of the collaboration, talking to scientists and looking at recent studies on malaria vaccines.

To help earn money to send lab equipment to the Bura Girls High School, Roberts-Buceta

and Adler have started a fundraiser. “They don’t have a lot of equipment to do labs, and research so we’re just going to send them some basic stuff,” Roberts-B said.

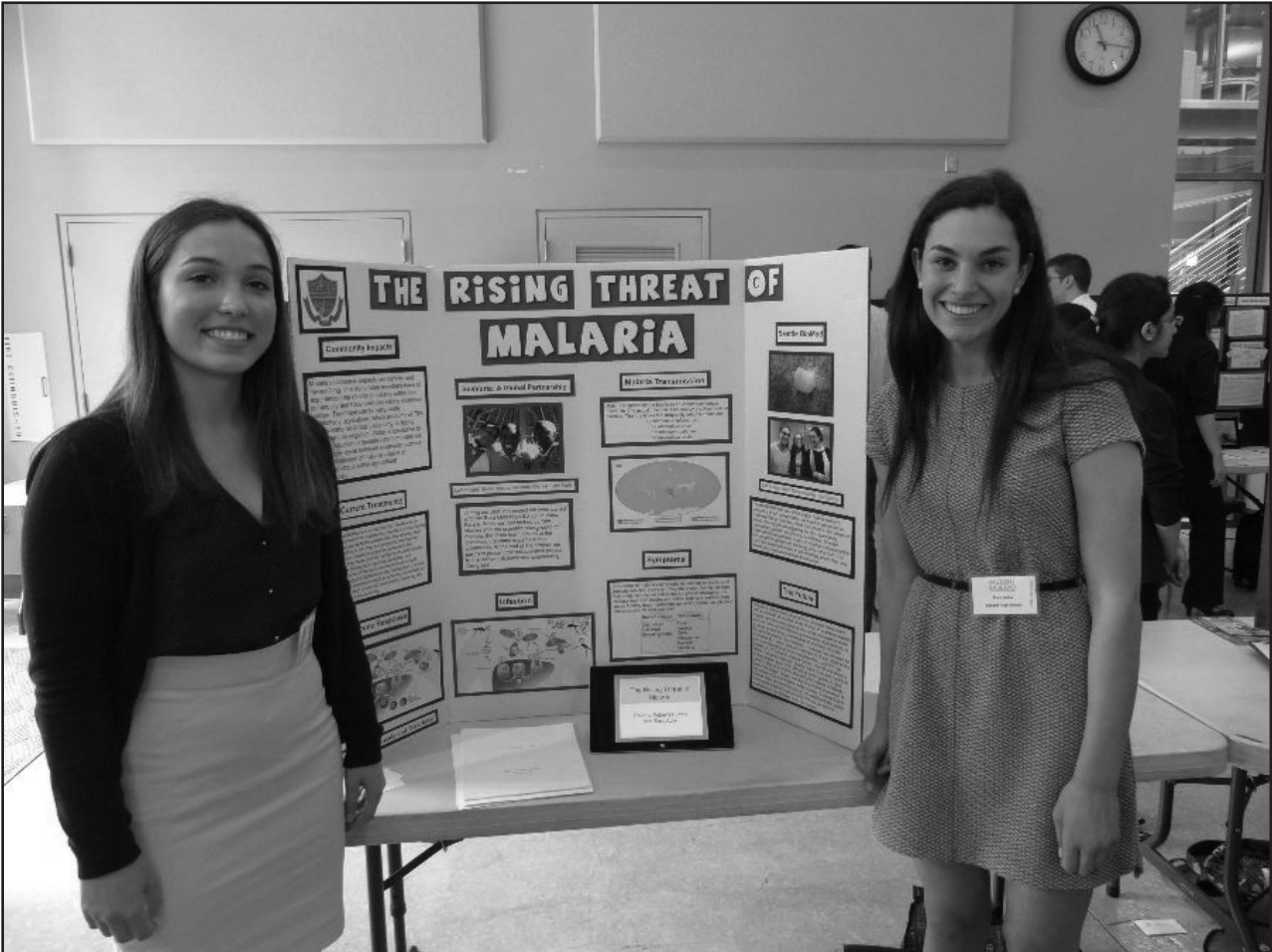
“The head of the category goes to Kenya, SeaVuria is actually her organization, she’s set up satellites so they have wifi there, so we’ve skyped them,” Adler said.

“The girls are really nice, they’re all really determined to do well in school and very intellectually curious,” Adler said.

Adler and Roberts-Buceta won first place for their project in the SeaVuria category “The

Rising Threat of Malaria”. In the drama and dance category Harper Byers, Gabby Kimmerly and Elizabeth Osborn won first place for their project “Debunked!”. June Lindberg, Linda Stewart and Peter Windus also won first place in the music category for their project “The Shape Shifting Chronicles of Sick Cell Disease”.

See more at: <http://www.ballardtalisman.com/news/2015/06/02/genetics-students-compete-in-in-bio-expo/#sthash.hsfKOMCy.dpuf>.



Seniors Paloma Roberts-Buceta and Tiara Adler show off their Bio Expo project, “The Rising Threat of Malaria.”
Photo courtesy of Penny Pagels

Ballard Grad Finds His Bliss Funding Scholarships



Doug Warne '56

Ballard Graduate Doug Warne '56 continues to be active in the Ballard community after his retirement in 1991 from a 30-year career teaching for the Kent School District. Doug’s interest is still education and he works on several scholarship committees to facilitate educational scholarships. Currently he is on the Norwegian Commercial Scholarship Committee where he has endowed an annual scholarship for a local student to attend the University of Oslo International Summer School. He himself attended the summer school in 1959 and says that attendance there was formative in his life. He is currently on the NCC scholarship committee and the Ballard Rotary Scholarship committee, and is one of 6 members of the International Sons of Norway Foundation which grants stipends for education, cultural events and special help for flood victims. For this organization, Warne also has endowed an annual scholarship for students related to Sons of Norway or Rotary members to attend a post-high school program in Norway. For his own Sons of Norway Lodge in Ballard, he has endowed a vocational scholarship for students needing training but not an academic program. Warne said that funding scholarships is easy nowadays with so many ways of doing it for the average person. He would be happy to visit with anyone who is interested in endowing or setting up a scholarship. They say find your bliss and fund it and Dear Abby says “ given while yur a liven soes your knownen where its goen”.

Warne is active in the Scandinavian community and has served on several Boards. He was made “Man of the Year” for his local Ballard Sons of Norway Lodge this year and also “Man of the Year” for the Norwegian Chamber of Commerce in 2012.

Support our Scholarships -
Donate now!

See form on page 3
or visit www.bhsfoundation.com/index.php/stay-connected/golden-beavers today!

Then come to next year’s lunch and see the good you are doing in action!

Ballard HS Foundation Dinner of Champions and Golf Tournament Raise Funds for Arts and Athletics

The 15th Annual Ballard High School Foundation Golf Tournament and 4th Annual Dinner of Champions were held this year on August 23 and 24 at The Golf Club at Newcastle.

This year's dinner honored Victor Salvino '51 for his generous support of time and resources for Ballard High School and the Ballard High School Foundation, and the Foundation's Golf Classic and Dinner of Champions.

15 years ago, Victor Salvino's drive and motivation led to the founding of the Annual Ballard High School Foundation Golf Classic. To this day, he regularly brings 20-25 family, friends, and colleagues all the way from Texas to the tournament. Victor has donated, provided matching grants, inspired others to donate, and generously and consistently supported Ballard High School and the Ballard HS Foundation. There's hardly a program in the school that hasn't felt his touch.

And Victor's support for the local Ballard community extends beyond the school. He is a valued supporter of the Shawn & John Goodman Boys & Girls Club at Ballard. He also supports many Texas charities, foundations, and organizations, including his beloved Southern Methodist University.

The principal dinner speaker was Quinn Buckner, currently Vice President of Communications for the Indiana Pacers Sports & Entertainment and TV analyst for the Pacers. Buckner is a former head coach of the Dallas Mavericks and played 10 seasons in the NBA, including 1983-84, when he was a member of Boston's NBA Championship team.

The evening also featured an appearance by Jerry Levias, the first African-American scholarship athlete and second African-American football player in the Southwest Conference, introducing Victor Salvino.

The BHS Foundation Golf Classic and Dinner of Champions has become a major source of funding for all the athletic and performing arts programs at Ballard High School. Athletics, Cheer Squad, Music, and the Performing Arts are among the school programs that receive benefits from this tournament.



What is Link Crew?

Link Crew is a high school orientation and transition program that increases freshman success. Members of the junior and senior class are trained to be Link Crew Leaders who act as positive role models, motivators, student mentors and teachers helping guide the freshmen to discover what it takes to be successful during their high school transition. More and more studies show that if students have a positive experience their first year in high school, their chance for success increases dramatically. Link Crew provides the structure



for freshmen to receive support and guidance from juniors and seniors who have been through the challenges that high school poses, and understand that the transition to a larger school can sometimes be overwhelming. Link Crew is a year long transition program with four components that contribute to its success:

- High School Orientation - Link Leaders and freshmen start building the mentor relationship and freshmen receive information about how to be successful in high school
- Academic Follow Ups - Link Leaders support freshman academic success and character development through structured classroom visits

- Social Follow Ups - Link Leaders and freshmen connect outside the classroom at social events to increase student engagement, and promote positive school climate
 - Leader Initiated Contacts - Link Leaders connect with their freshmen on a more individual basis
- And Link Crew works: Link Crew schools report having greater student connection, increased extracurricular participation, fewer discipline issues and improved academic performance. Link Crew builds leadership skills for upperclassmen and school skills for freshmen. School safety increases and the incidence of bullying decreases with the Link Crew curriculum.

Ballard High Golden Beavers and the Ballard High Foundation

by Dick Mitchell '51

The Golden Beavers were established in 1986 by a group of grads that had been out of BHS for 50 years or more. It is primarily a scholarship organization and is probably as close at it comes to also being an Alumni Association. Like the Foundation it is a 5013C organization which means if you itemize your deductions on your IRS form 1040 it offers an tax deduction. Currently there are around 1000 dues paying members which is \$25 per year or lifetime \$100. In the 29 years of existence they have awarded just under \$500,000 to Ballard graduates in scholarship funds all of which have been donated. Each year the scholarship committee interviews 20-30 students selected by the Counseling and Administrative staff. Usually around ten are selected to receive assistance in the amount of \$3,000 for five or six students who plan on attending a four year college and \$2,000 for those four or five who are headed for a two year program.(This is a one time payment for one year.) The selected students attend the GB Scholarship Luncheon which is held each spring on a Saturday at which time they receive their respective awards. Also attending are 150 - 200 Golden Beaver Members and several staff members. The GB's have class representatives for each year who attend quarterly meetings. They also serve as reporters on their class by writing current stories and providing pictures for their articles. These are then published in our GB Log which is mailed twice per year. Logs can be provided for the '55 reunion.

Objectives: To keep alive the spirit of BHS. To develop and renew friendships among Ballard Grads. To provide scholarships to deserving BHS seniors. To act as an advocate for BHS.

Financial Statement

Ballard High School
Golden Beavers Association
P.O. Box 70572
Seattle, WA 98127

July 22, 2015

To the Executive Board of Ballard High School
Golden Beavers Assoc
Seattle, Washington

The accompanying statement of financial condition-cash basis of Ballard High School Golden Beavers Assoc as of June 30, 2015 and the related statement of revenues, expenses and change in fund balances-cash basis for the twelve months then ended have been prepared by Henry L. Nornberg, CPA. I have prepared such financial statements in my capacity as treasurer of Ballard High School Golden Beavers Association.

Respectfully submitted,

Henry L. Nornberg

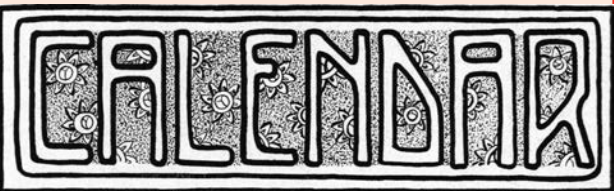
Certified Public Accountant



Henry L. Nornberg '51

The Ballard High School Golden Beavers Association is a 501 (c) 3 charitable organization.

Ballard High School Golden Beavers Association			
Statement of Financial Condition-Cash Basis			
June 30, 2015			
Assets			
Cash and cash equivalents			\$ 335,502.60
Investments			\$ 199,870.00
	Total assets		\$ 535,372.60
			=====
Liabilities and Fund Balances			
Liabilities			
Custodial accounts			\$ 9,987.82
Deferred Income			22,137.50
	Total liabilities		32,125.32
Fund Balances			
General Fund			28,554.09
Scholarship Fund			474,693.19
			503,247.28
			=====
	Total Liabilities and Fund Balances		535,372.60
Ballard High School Golden Beavers Association			
Statement of Revenues, Expenses and Changes in Fund Balances - Cash Basis			
for the 12 months ended June 30, 2015			
	General Fund	Scholarship Fund	Combined
Revenues	\$ 7,576.49	\$256,300.96	\$263,877.45
Expenses	7,133.01	67,895.62	75,028.63
Excess (deficit) of Revenues over Expenses	876.67	(25,144.47)	(24,267.80)
Fund Balances, July 1, 2014		28,110.61	286,287.85
			314,398.46
Fund balances, June 30, 2015	\$ 28,554.09	\$474,693.19	\$503,247.28
	=====	=====	=====



Dates to Remember
29th Annual Golden
Beaver Scholarship
Luncheon

Date and location to be determined
(April/May 2016)

Deadline,
Spring Issue,
Golden Beaver Log
February 19, 2016

Golden Beavers
Board of Directors and
Class Representatives Meetings

All meetings take place at 10:00 A.M.,
at the Nordic Heritage Museum,
3014 NW 67th St, Seattle, WA

Thursday, December 10, 2015

Thursday, March 10, 2016

Thursday, June 9, 2016

Class Reunions
See Class Notes for Details

or visit
<http://www.bhsfoundation.com/index.php/stay-connected/reunions>

BHS College
Profile 2014

81% of the 321 graduates in the BHS Class of 2014 intended to enroll in an institution of higher learning. 57% intended to enroll in a four-year institution, and 24% intended to enroll in a two-year institution.

A sampling of colleges to which Class of 2013 and 2014 students were accepted: Boston College, Beloit, Brown, Cal Maritime, Carnegie Mellon, Colgate, Cornell, Emerson, Georgetown, Howard, Macalester, McGill, Mount Holyoke, Northwestern, NYU, NYU Shanghai, Oberlin, Pomona, Princeton, Reed, Rensselaer, Rhode Island School of Design, Rice, Sarah Lawrence, Scripps, Smith, Stanford, Temple, Tufts, UMass Amherst, UC Berkeley, UCLA, USC, UChicago, UNC School of the Arts, USt.Andrews Scotland, UWashington, and Whitman.

2014 ACT Test Scores	
English average	24
Math average	24.6
Reading average	25.2
Science average	23.8
Composite average	24.5

2014 SAT I Scores	
Critical Reading	560
Writing Mean	554
Math Mean	536

2015 Golden Beaver Scholarship
Recipients

continued from page 4

about depression and suicide prevention and awareness.

Outside of Ballard, Gabby is a counselor to 5- and 6-year-olds at the Ballard Boys and Girls Club. Every day after school, she works until 6:00 PM at the Boys and Girls Club, where she is also a member of the Keystone Club, which is an organization that volunteers at the Ballard Seafood Fest, Seattle Marathon, the MS Walk and then earns enough volunteer points to attend the National Keystone Youth Leadership Convention. Gabby was awarded the Youth of the Year at the Boys and Girls Club this year.

Gabby likes to travel and last year went to Ghana with Rustic Pathways where they visited schools and helped build a restroom at one school.

Roby Bader Scholarship

Lindsey Fasser plans to major in International Studies, where she hopes to gain the tools to take small actions of goodwill to a larger scale.

At Ballard, Lindsey was ASB President, a

member and president of SLAM, and a member of Link Crew and the National Honor Society. She was a teaching assistant in Special Education classes, Student of the Month, Student of the quarter for work in SLAM, and earned Rotarian Club honors. She was also a member of the swim team.

Outside of Ballard, Lindsey is a volunteer with Special Olympics and a partner on the Ballard High unified soccer and basketball teams. She also volunteers at West Woodland Elementary School and goes to camp, where she is a counselor for girls grade 4 and 5.

Now that you’ve learned about the phenomenal students your Golden Beaver Scholarships support, mark your calendar to be sure to join us next year for the 29th Annual Scholarship Luncheon. We’ll let you know the date and place in upcoming news.

Keep in touch with the news at BHS -
sign up to receive The Ballard Talisman
at www.bhsfoundation.com!

Student Lives Always Matter

The mission of Student Lives Always Matter (SLAM) is to perform suicide prevention activities and raise awareness about the problem of teen suicide. School year activities include classroom presentations at

BHS and local middle schools; coordinating and planning Suicide Prevention Week and distributing leaflets and posters. After-school participation earns volunteer service hours.

SLAM spreads the love with annual Chalk Project

The Talisman
Althea Billings, Editor-in-Chief
September 10, 2014

Students walked to school Wednesday morning expecting the pavement walkways to match the gray skies above. Instead, they were greeted by cheery pastels, proclaiming messages such as “You matter,” and “You look amazing!” among others.

Why the sudden increase in chalk-based compliments? These messages were the

Don’t miss it -
Sign up as a Golden Beaver today to
ensure that you continue to receive
your copy of *The Golden Beaver Log*!
See page 3.

The Ballard High Golden Beavers Log

Editorial Board
Jon Setter ’54, Editor
Charlie See’56
Don Simpson ’53
Dick Mitchell ’51
Judy Rikansrud ’58
Richard N. J. Lee ’61

Publisher
The Ballard High School Golden Beavers
Association
PO Box 70572
Seattle, WA 98127-0572

Printer and Project Manager
Design & Graphics

Production
Marjorie S. Goldfarb, Bits & Pages

Student Lives Always Matter (SLAM) Club’s contribution to what is nationally known as the You-Are-Loved Chalk Message Project. This project was originally designed to combat hate for the LGBTQ community and its youth with positive and uplifting messages.

“[The Chalk Project] is giving [students] some motivation or inspiration before they start, because school can be really hard and stressful,” senior SLAM member Natalie Fernandi said. “Everybody likes to hear nice things, compliments... and when you don’t have anybody telling that to you, or your inner voice, it’s kind of depressing.”

According to the Trevor Project (a 24/7 crisis intervention and suicide prevention lifeline), LGBTQ youth are four to eight times more likely to attempt suicide than heterosexual youth.

See more at: <http://www.ballardtalisman.com/news/2014/09/10/slam-spreads-the-love-with-annual-chalk-project/#sthash.kXbSvS8s.dpuf>

What’s Inside

Golden Beavers Scholarship Winners

Principal’s Greeting

Message from the Golden Beavers
President

Class Notes

Genetics Students Compete in Bio Expo

Dinner of Champions and Golf Tournament

Raise Funds for Arts and Athletics

What is Link Crew?

And Much More